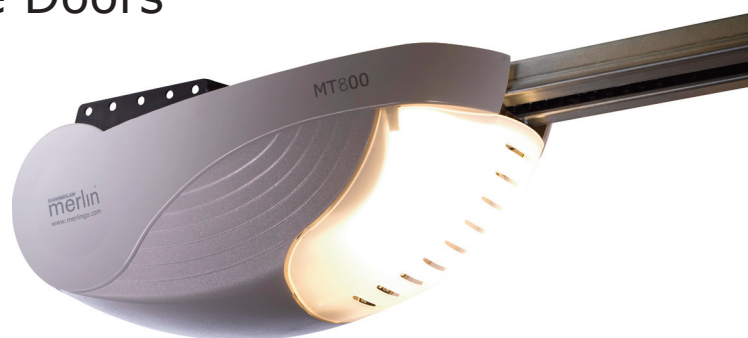


Powerful DC Sectional Door Opener for Heavy Double Garage Doors

Rated door area	15m ²
Pulling force	800N
Motor	DC
Drive	Chain/Belt



Suitable for all tilt or sectional garage doors up to 15m²

Soft Start/Stop Function:

The MT800 is equipped with Chamberlain Soft Start/Stop technology, designed to ensure smooth and quiet door operation.

Automatic Safety Function:

With its automatic safety function your garage door will stop and reverse automatically if obstructed going down or stop if obstructed going up. Your door can also be stopped and locked at any height for ventilation.

Automatic Force Sensing:

Equipped with automatic force sensing, with each operation the garage door opener monitors and adjusts the force needed to open your garage door.

Ultra Quiet Belt Option:

The C rail track combined with a belt drive system means the opener produces little or no sound when opening or closing.

Wireless Wall Button (included):

Wireless push button equipped with rolling code technology for remote operation in the garage or home.

Three Channel Mini Transmitter (two included):

A three channel mini-transmitter with rolling code technology can control up to three different doors or gates.

Auto-close:

Automatically closes door after a pre-determined delay time. Requires IR Beams to be installed.

24V Accessory Output:

Allows easy installation of wired accessory devices directly to the opener's power supply terminals.

Warranty:

The MT800 comes with a two year general warranty and a five year warranty on the motor.

Key Features	Optional Accessories	Specifications
<ul style="list-style-type: none"> Soft Start/Stop operation Auto safety function Auto force sensing Chain or belt drive Two 3 channel mini-transmitters Wireless wall button Rolling code technology Up to 64 memory registers Manual release handle Courtesy light Auto close One piece or segmented C Rail 24V accessory output 5 year motor warranty 	<ul style="list-style-type: none"> Safety beam sensors Motion detecting control panel Keyed manual release Single channel transmitter 3 or 4 channel mini-transmitter Wireless wall button Wireless keypad Fingerprint keyless entry system 	<ul style="list-style-type: none"> 24 DC motor with thermal overload protection Input voltage: 240V AC Rated door area 15m² Pulling force: 800N 433.92 MHz AM radio with rolling code

3 Channel "bear claw" mini-transmitter

Part No (AM): C945

Controls up to three different doors.

Suitable for pocket or key chain.



Fingerprint keyless entry pad

Part No: C379

Unique fingerprint sensor technology activates your garage door opener quickly and safely.



4 Channel mini-transmitter

Part No (AM): CM844

Controls up to four different doors.

Includes a clip-on system for dashboard mounting.



Up to 10 registered users can activate the opener. Great for seniors and families with children.

Wireless wall button

Part No (AM): CM128

Equipped with rolling code technology for remote operation in the garage or the home.



Wireless keypad

Part No: C840

Mounts on the outside wall and enables you to open your garage door when you enter a 4 digit security code.



Open door monitor

Part No: CLDM1ANZ

Wireless accessory that indicates if the garage door is open or closed.



Protector system safety beam sensors

Part No: C77

Incorporates safety beam sensors that sense obstruction and stop the door closing before impact. This system is strongly recommended for added safety.

